



**WATERPROOFING &
BUILDING PRODUCTS**



**COMMERCIAL
PRODUCT**



COMPOSITE BENTONITE SHEET WATERPROOFING SYSTEM

ArmorClay™ 600 / 1000 / 1500





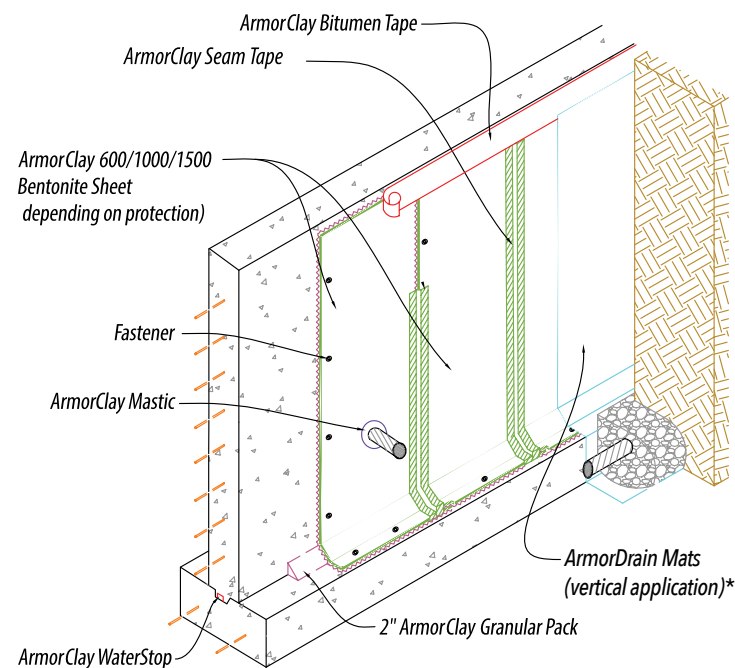
Use ArmorClay with Mar-flex commercial grade waterproofing products for unmatched protection and superior warranties.

Why Bentonite?

ArmorClay™ bentonite products and accessories are a tested and proven solution for commercial waterproofing applications. Bentonite clay expands when wet, absorbing several times its weight in water and makes for a very stable, below-grade solution.



Foundation Wall



* For horizontal applications, use "C" Drain 400 Drainage Board

ADVANTAGES:

- Strong cross-laminated HDPE
- Self-sealing bentonite layer
- Easy installations with ArmorClay Adhesive
- Adhesion to concrete
- Adjustable placement
- Longevity: life of the structure
- No VOC—solvent free

Product Description:

ArmorClay 600 is a waterproofing membrane that combines the thermal stability and high performance of a cross-laminated HDPE sheet with the long-term sealing of bentonite clay. It is non-toxic, fire resistant, and emits no solvents or VOC's. Installation is fast and efficient – bonding tightly to the recommended Spray Adhesive. Best of all – NO nails required. ArmorClay will provide waterproof protection equal to the life of the structure.

ArmorClay 1000 is a multi-layer waterproofing membrane consisting of bentonite, virgin high-density polyethylene, and a protective layer of non-woven polypropylene. The tough HDPE membrane provides the primary waterproofing envelope while the expandable bentonite clay provides the self-sealing reassurance under hydrostatic conditions. A step up from ArmorClay 600 when conditions call for it.

ArmorClay 1500 will have unsurpassed life expectancy and is the ultimate multi-layered waterproofing system that has bentonite clay on both sides of virgin HDPE membrane and a thin scrim of polypropylene to protect the bentonite from exposure to the elements.

This system will form waterproof barriers to both sides of the HDPE. It combines the swelling properties of Bentonite clay with the strength and protection of virgin HDPE sheets to form two layers of self-sealing waterproofing, for the toughest projects even under hydrostatic conditions.



Product Application:

The ArmorClay line (600 / 1000 / 1500) is designed for multiple above and below-grade applications.

It is excellent for use on poured and ICF foundation walls, tunnels, plaza and parking decks (ArmorClay 600). It is ideal for blindside installation such as lagging, under floors, and elevator pits or standard installations such as backfilled wall, decks/tunnels or any application under conditions of high water head.

It is especially effective where the waterproofing is applied before the walls or floor are poured such as blindside installation lagging, under floors, and elevator pits (ArmorClay 1500). All ArmorClay products can be used in combination with Mar-flex Neofoam Insulation to prevent water migration behind the insulation. The three products can also be used as a complete system with ArmorDrain mats.

Sample Specification ArmorClay 1500 (See Product Catalog for complete details on ArmorClay 600, 1000, 1500 and Accessories)

| Property | Thickness | Membrane | Membrane High-Density Polyethylene | Bentonite (2 layers) | Weight | Puncture Resistance | Tensile Strength: Membrane | % Elongation at break | Crack Bridging | Resistance to hydrostatic head | Water Vapor Permeability: | Resistance to micro-organisms: (bacteria, fungi, mold, yeast) | Toxicity: | Staining: | Chemical Resistance: | Freeze/ thaw stability | Installation Temperatures | Life Expectancy |
|----------|-----------|---------------|------------------------------------|------------------------|---|---------------------|--|--------------------------|----------------------|--------------------------------|---|---|--------------------|----------------------------|--|--|----------------------------------|---|
| Method | - | | | | | ASTM E-154-88 | ASTM D638 | ASTM D638 Type 1 dogbone | | ASTM D751 Procedure A | ASTM E 9E6-80 | ASTM E154-88 Section 13 | | | | | ASTM D746, ASTM D1238 | |
| Results | .26" | Fabric/ Gray/ | White 20-mil virgin resin HDPE | Sodium Montmorillonite | 1.5 lb per sq ft (7.34kg/m ²) 172 | 172 LBS (77.5 kg) | MD: 3750 psi (25.9 MPa) TD: 3780 psi (26.1 MPa) | 567% | 3/8" (0.95 cm) crack | 169 ft. (51.5 m) of water | 0.39 x 10 ⁻¹³ cm/sec.0.61 ng/m ² .s.Pa 0.024 Perms (grains/ft ² * hr * inHg) | Unaffected | Low. Do not ingest | No known incompatibilities | Extremely high resistance to chemicals & gases. Contact mfg for specific info. | No effect before or after installation | -40°F to 150°F (-40°C to 65.5°C) | Both HDPE and bentonite have life expectancy measurable in hundreds-of-years. |

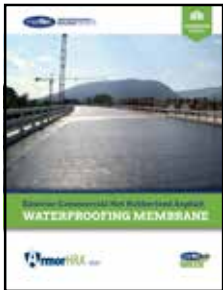
Mar-flex offers the best commercial waterproofing products in the industry.



ArmorClay



ArmorAirBarrier



ArmorHRA



ArmorMasonry Sealer



ArmorSheet



ArmorDrain



ArmorMembrane



ArmorFoam

ArmorBlock

Mar-flex® Waterproofing & Building products

We are a family-owned innovative manufacturer of commercial grade, waterproofing foundation and air barrier products. We offer unsurpassed quality and reliability with time tested solutions for the building industry.

Complete waterproofing systems

Mar-flex has set the industry standard for offering superior water-based and solvent-based waterproofing membranes, an extensive “green” product assortment and a wide range of drainage and insulation boards to complete the job based on your market’s needs.

Visit our website, www.mar-flex.com/armor for more information:

- Detailed Product Sheets
- Detailed Spec Sheets
- Detailed Application Descriptions
- Detailed Installation Guides

Mar-flex Warranty

Mar-flex Waterproofing & Building Products warrants this product to be free of defects in workmanship and materials only at the time of shipment from our factory. If any Armor Series materials prove to contain manufacturing defects that substantially affect their performance, Mar-flex Waterproofing & Building Products will, at its option, replace the materials or refund its purchase price.

This limited warranty is the only warranty extended by Mar-flex Waterproofing & Building Products with respect to its materials. There are no other warranties including the implied warranties of merchantability and fitness for a particular purpose.

Mar-flex Waterproofing & Building Products specifically disclaims liability for any incidental, consequential or other damages including, but not limited to, loss of profits or damages to a structure or its contents arising under any theory of law whatsoever.

The dollar value of Mar-flex’s liability and buyer’s remedy under this limited warranty shall not exceed the purchase price of the Mar-flex Waterproofing & Building Products material in question.



Printed on recycled paper

Try the complete line of Mar-flex products.

Bentonite Clay Waterproofing | Self-Adhering Sheet Waterproofing | Fluid-Applied Waterproofing
 Drainage Mats | Fluid-Applied Dampproofing | Air & Vapor Barriers | Hot-Applied Waterproofing
 Foam Insulation | Masonry Sealer