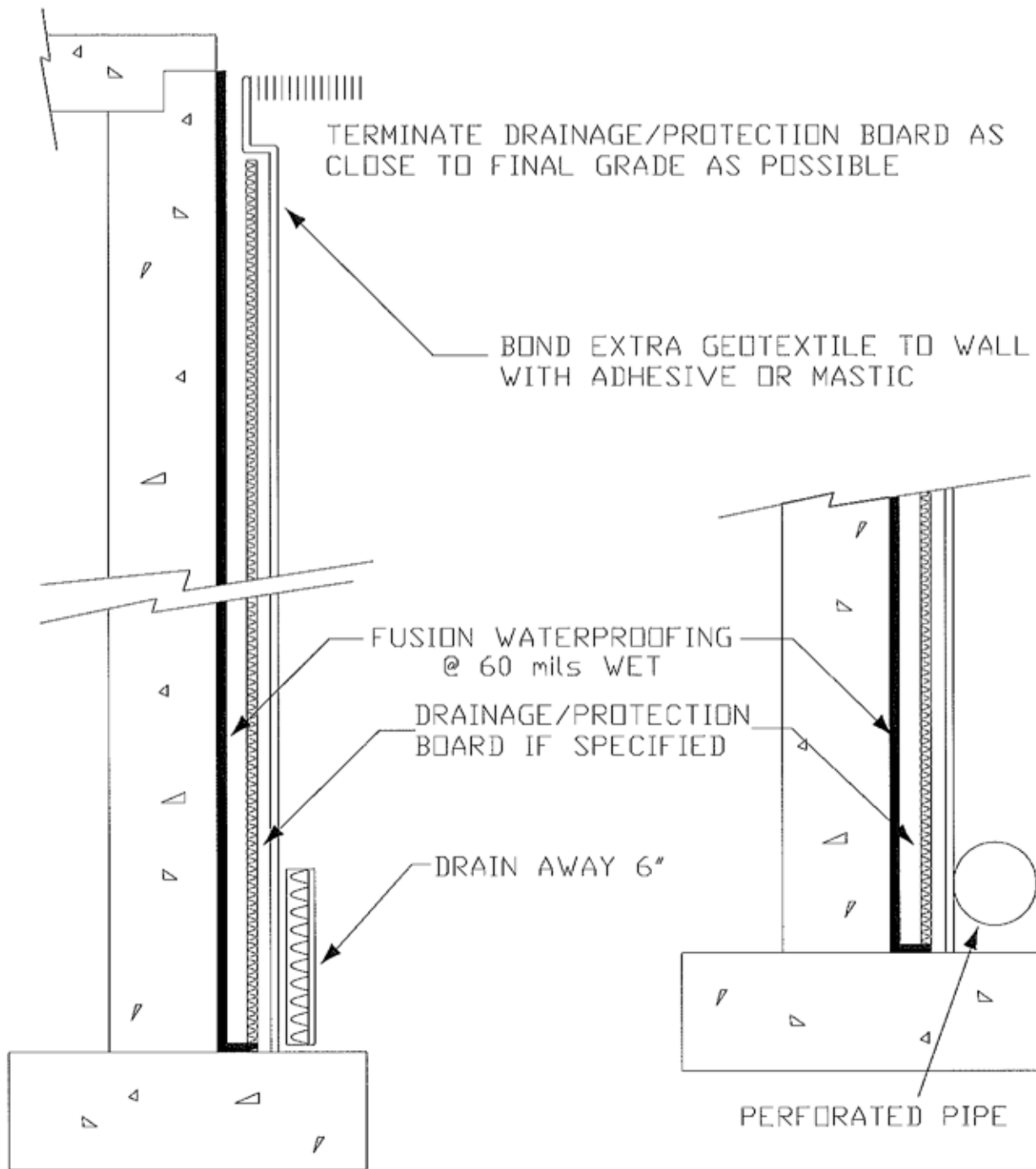


# TYPICAL FOUNDATION WALL DETAIL

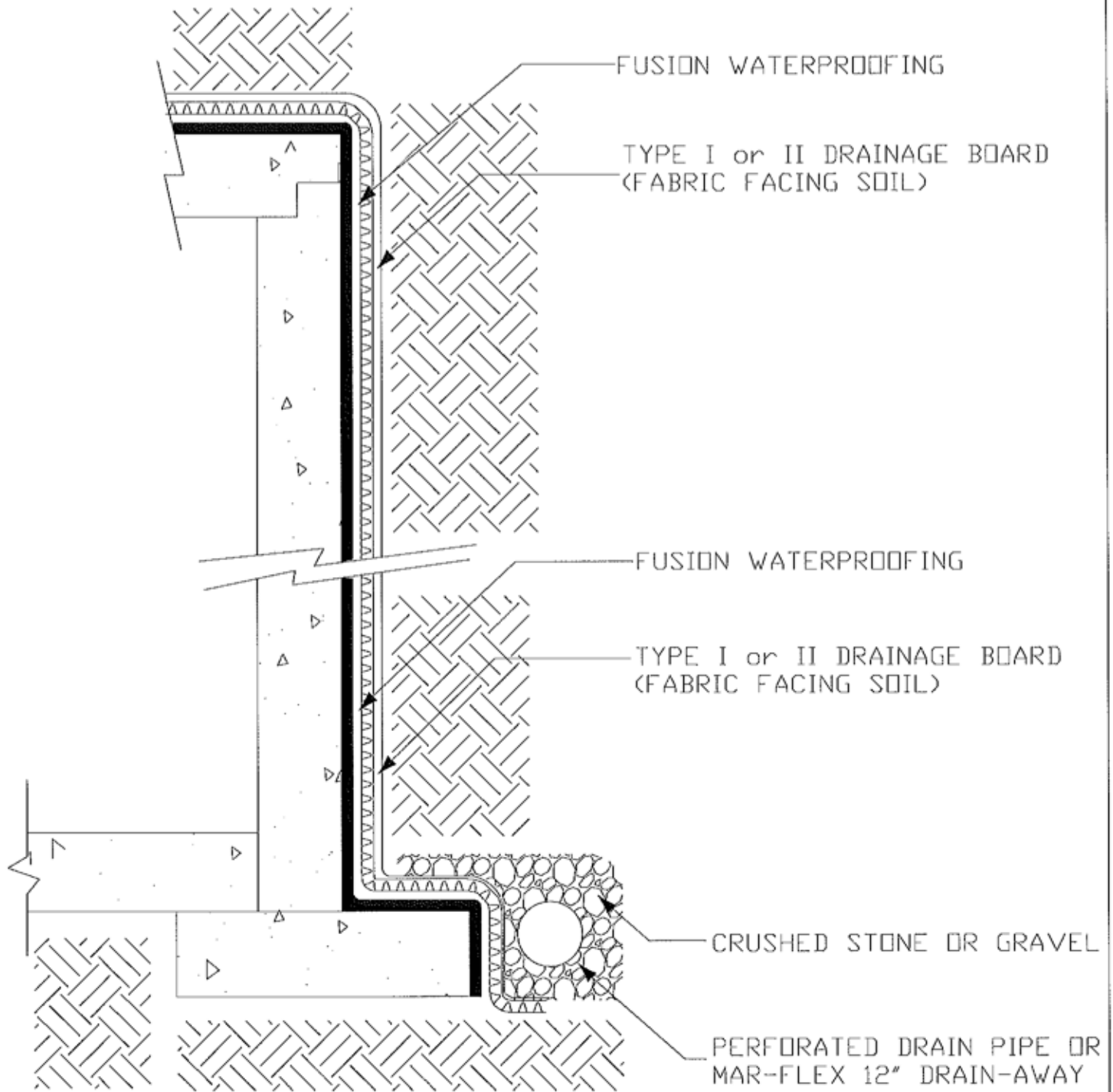


NOTE: ALTERNATE METHOD FOR WATER COLLECTION. SEE DRAIN AWAY FOUNDATION DRAINAGE FOR FITTINGS AND ADAPTORS

Mar-flex Waterproofing & Building Products  
500 Business Pkwy  
Carlisle, OH 45005  
Phone: (800) 498-1411  
Phone: (513) 422-7285  
Fax: (513) 422-7282  
[www.mar-flex.com](http://www.mar-flex.com)

F1/FWS

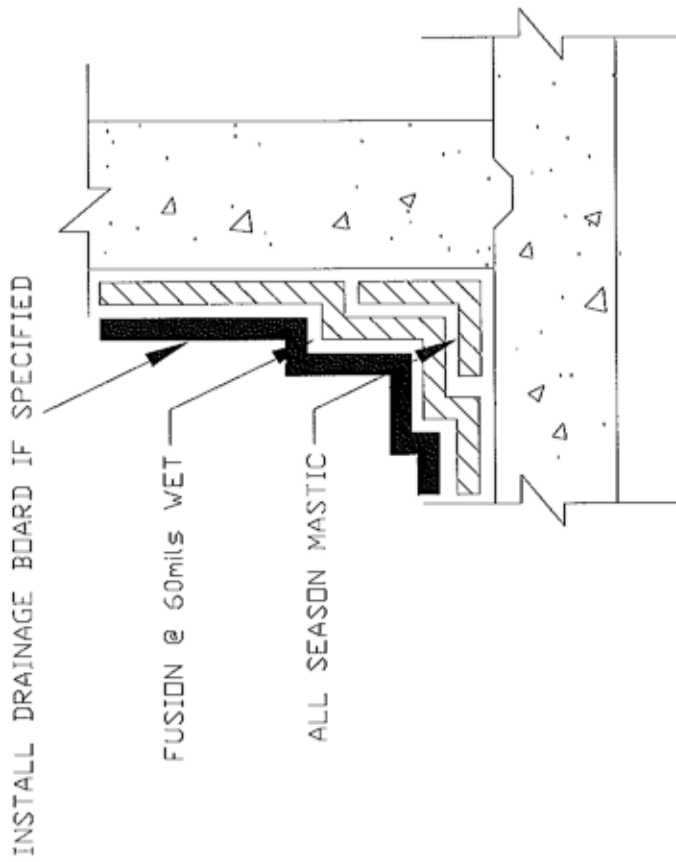
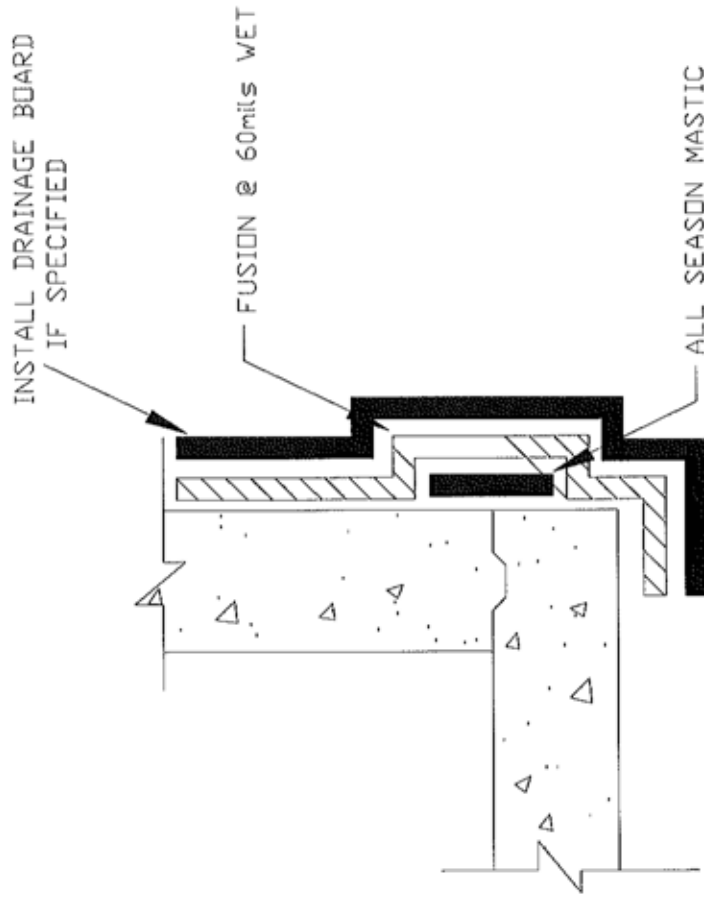
# TYPICAL TUNNEL DETAIL



Mar-flex Waterproofing & Building Products  
500 Business Pkwy  
Carlisle, OH 45005  
Phone: (800) 498-1411  
Phone: (513) 422-7285  
Fax: (513) 422-7282  
[www.mar-flex.com](http://www.mar-flex.com)

F7/TTD

# INSIDE/OUTSIDE ANGLE CHANGES WITH CONSTRUCTION JOINT



Mar-flex Waterproofing & Building Products

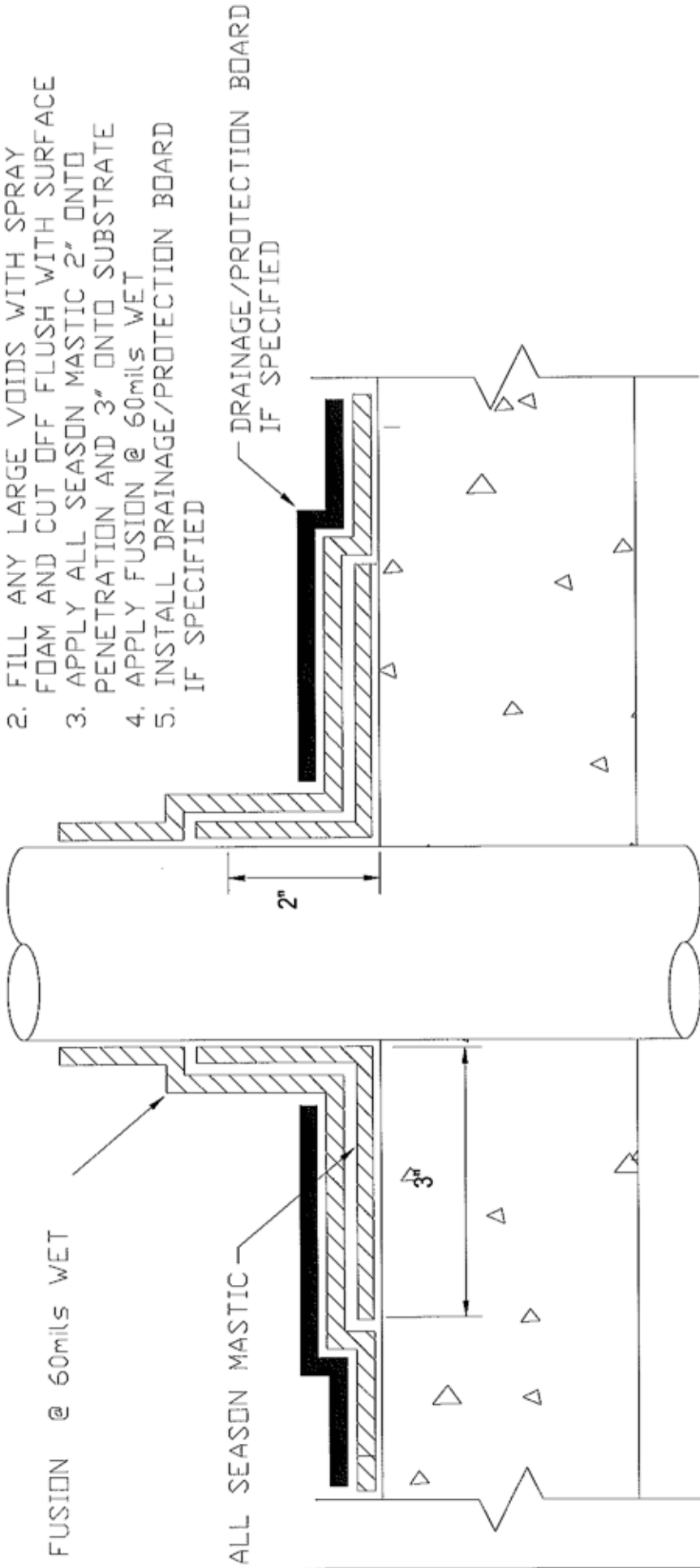
500 Business Pkwy  
Carlisle, OH 45005  
Phone: (800) 498-1411  
Phone: (513) 422-7285  
Fax: (513) 422-7282  
[www.mar-flex.com](http://www.mar-flex.com)

F5/ACCU

# PIPE PENETRATION

**NOTES:**

1. CLEAN METAL TO BRIGHT FINISH
2. FILL ANY LARGE VOIDS WITH SPRAY FOAM AND CUT OFF FLUSH WITH SURFACE
3. APPLY ALL SEASON MASTIC 2" ONTO PENETRATION AND 3" ONTO SUBSTRATE
4. APPLY FUSION @ 60mils WET
5. INSTALL DRAINAGE/PROTECTION BOARD IF SPECIFIED

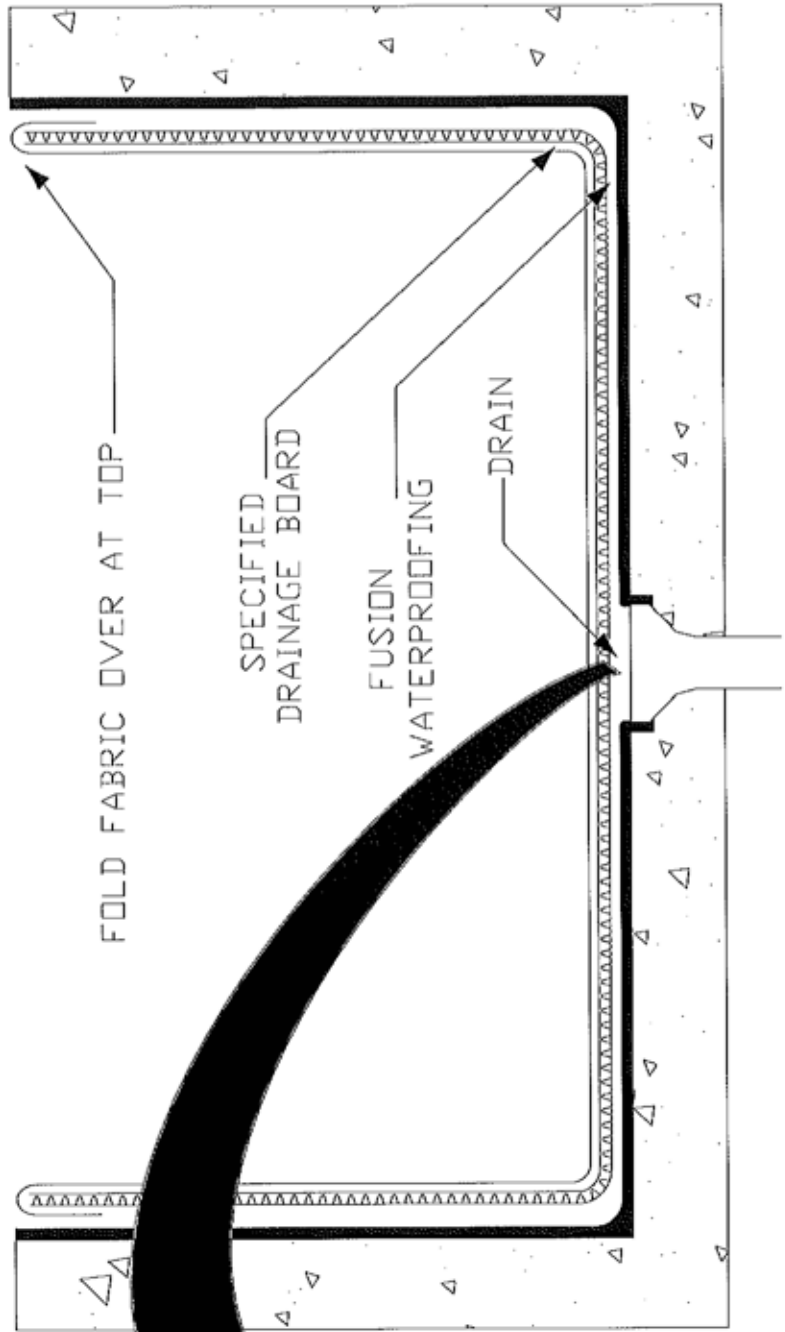


Mar-flex Waterproofing & Building Products

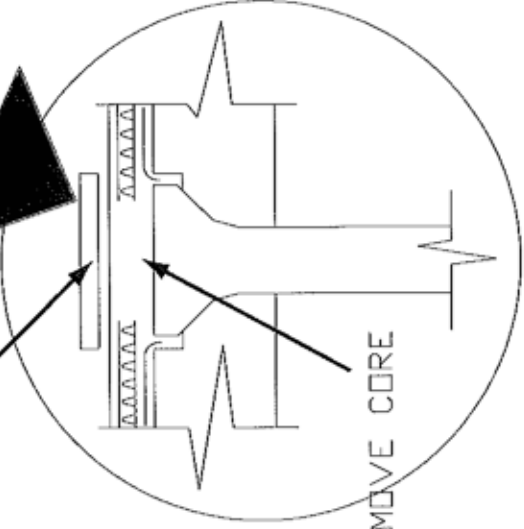
500 Business Pkwy  
 Carlisle, OH 45005  
 Phone: (800) 498-1411  
 Phone: (513) 422-7285  
 Fax: (513) 422-7282  
[www.mar-flex.com](http://www.mar-flex.com)

F8/TPP

# TYPICAL PLANTER DETAIL



ALUMINUM PLATE



REMOVE CORE

NOTE: WHEN USING DRAINAGE BOARD REMOVE CORE AND COVER WITH ALUMINUM PLATE AS SHOWN IN DETAIL

DETAIL 1

Mar-flex Waterproofing & Building Products

500 Business Pkwy  
Carlisle, OH 45005  
Phone: (800) 498-1411  
Phone: (513) 422-7285  
Fax: (513) 422-7282  
[www.mar-flex.com](http://www.mar-flex.com)

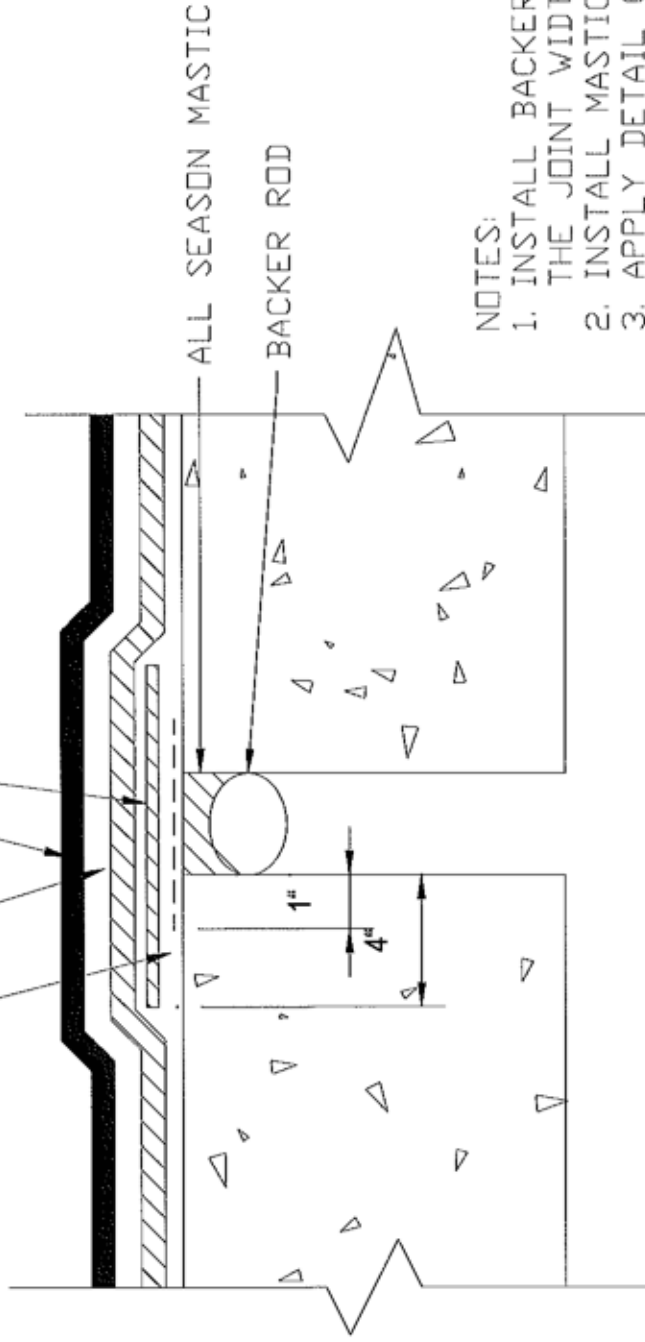
F6/TPD

# EXPANSION JOINTS LESS THAN 1/2"

ECOFLASH — FUSION WATERPROOFING @ 60mils WET

ALL SEASON MASTIC

DETAIL COAT FUSION WATERPROOFING @ 30 mils



**NOTES:**

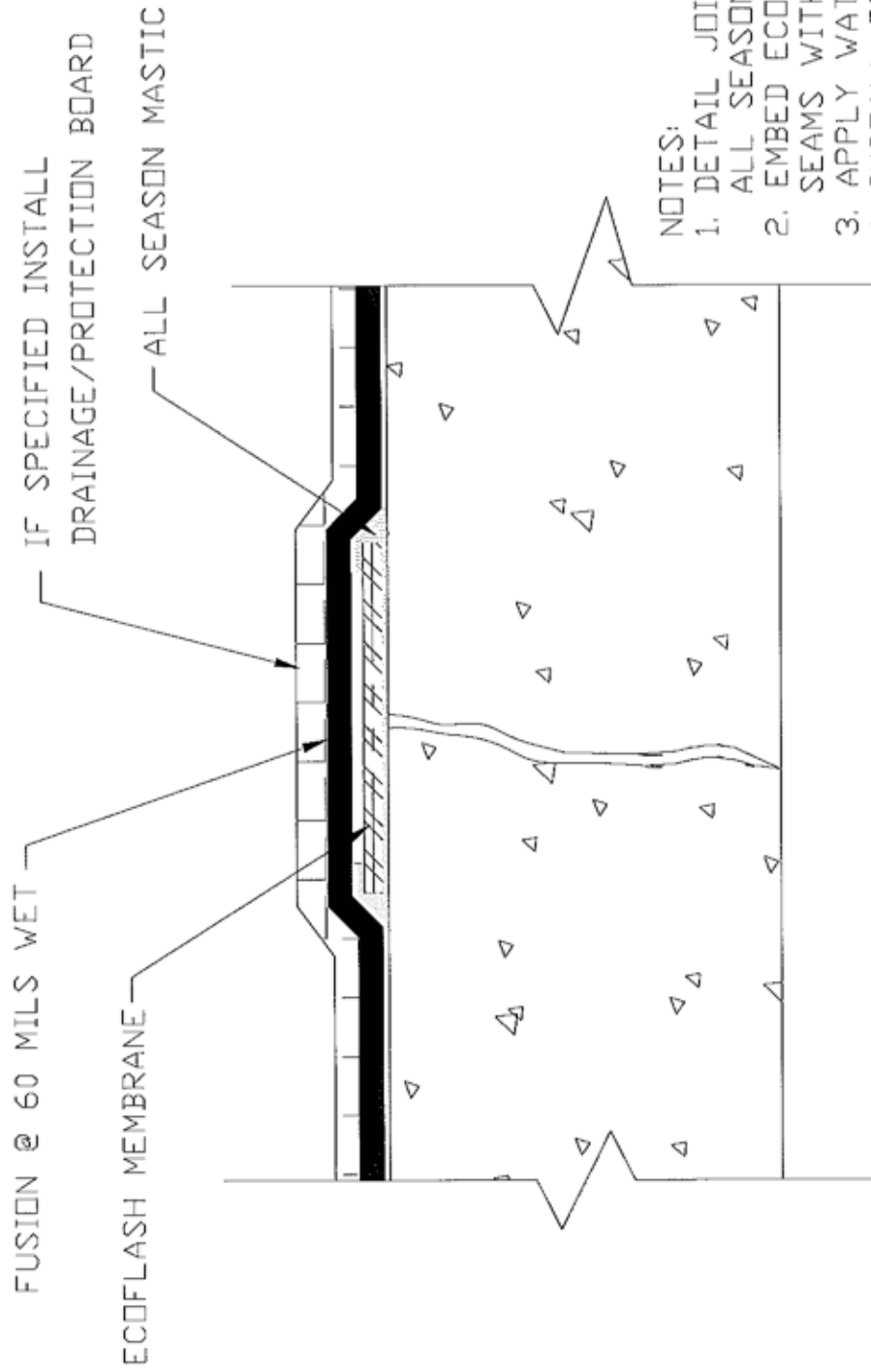
1. INSTALL BACKER ROD 1/2 THE DEPTH OF THE JOINT WIDTH. 1/2" W = 1/4" DEPTH.
2. INSTALL MASTIC FLUSH WITH SURFACE.
3. APPLY DETAIL COAT FUSION @ 30 mils WET
4. APPLY WATERPROOFING COAT @ 60mils WET

**Mar-flex Waterproofing & Building Products**

500 Business Pkwy  
 Carlisle, OH 45005  
 Phone: (800) 498-1411  
 Phone: (513) 422-7285  
 Fax: (513) 422-7282  
[www.mar-flex.com](http://www.mar-flex.com)

F4/EJL

CRACK TREATMENT GREATER THAN 1/16" CONSTRUCTION JOINTS OR MOVING CRACKS



NOTES:

1. DETAIL JOINT OR CRACK WITH ALL SEASON MASTIC.
2. EMBED ECOFLASH IN MASTIC DETAIL SEAMS WITH MASTIC.
3. APPLY WATERPROOFING @ 60mils WET.
4. INSTALL DRAINAGE/PROTECTION BOARD IF SPECIFIED.

Mar-flex Waterproofing & Building Products

500 Business Pkwy  
Carlisle, OH 45005  
Phone: (800) 498-1411  
Phone: (513) 422-7285  
Fax: (513) 422-7282  
[www.mar-flex.com](http://www.mar-flex.com)

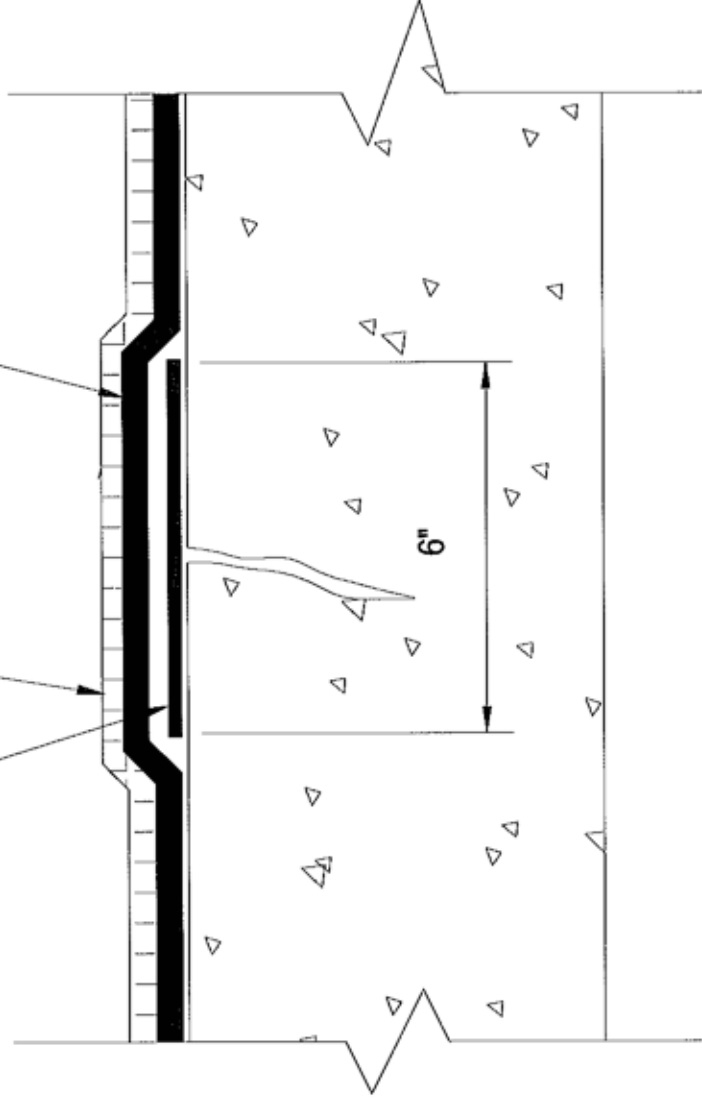
F3/CTG

**CRACK TREATMENT**  
**NON MOVING CRACKS LESS THAN 1/16"**

DETAIL COAT ALL SEASON MASTIC

ECCO-FLASH

FUSION WATERPROOFING @ 60mils WET



- NOTES:
1. APPLY MASTIC A MINIMUM OF 2" ON EITHER SIDE OF CRACK.
  2. APPLY ECOFLASH A MINIMUM OF 4" ON EITHER SIDE OF CRACK.
  3. DETAIL ALL ECOFLASH SEAMS WITH MASTIC

Mar-flex Waterproofing & Building Products  
500 Business Pkwy  
Carlisle, OH 45005  
Phone: (800) 498-1411  
Phone: (513) 422-7285  
Fax: (513) 422-7282  
[www.mar-flex.com](http://www.mar-flex.com)

F2/CTL