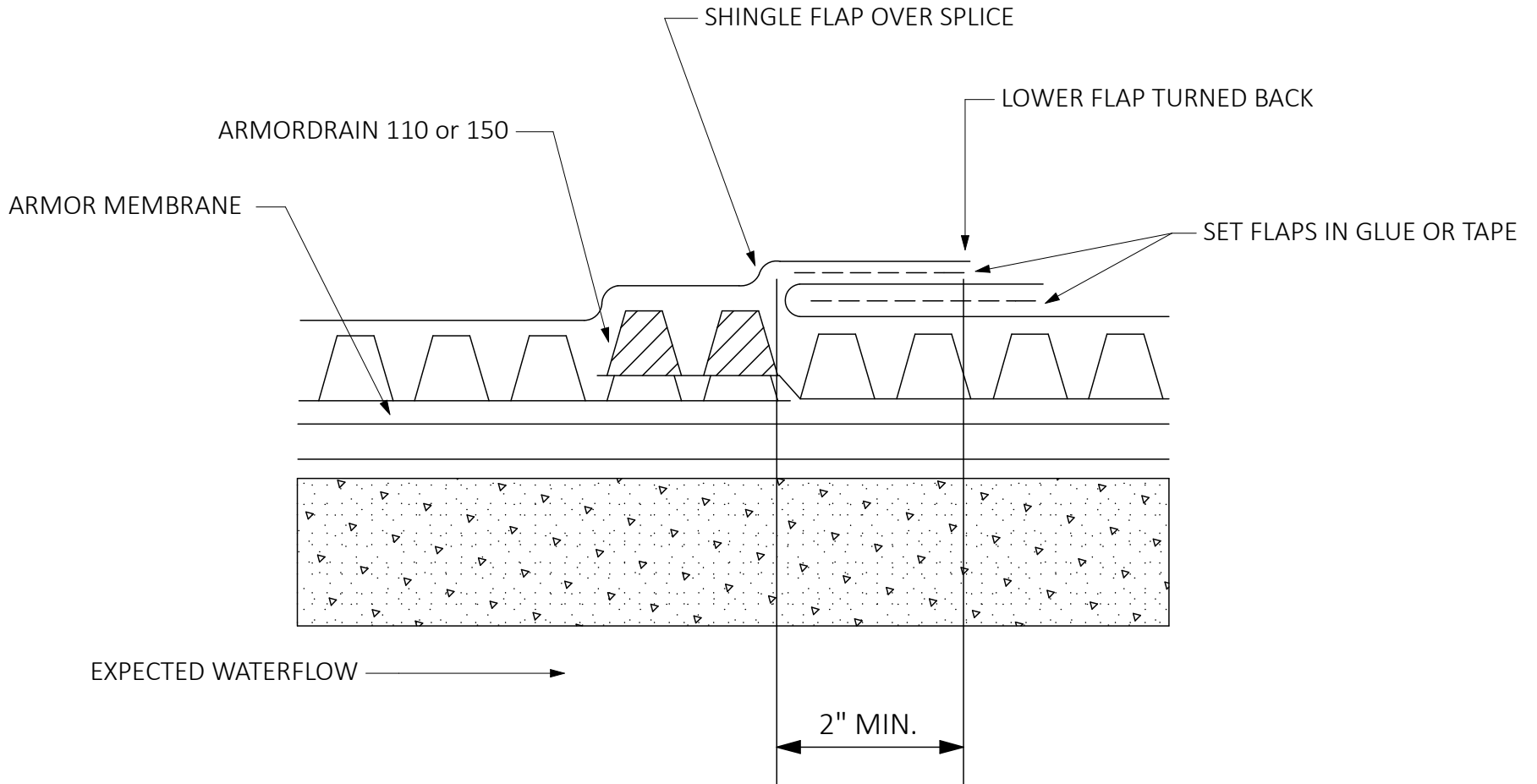




**WATERPROOFING &
BUILDING PRODUCTS**



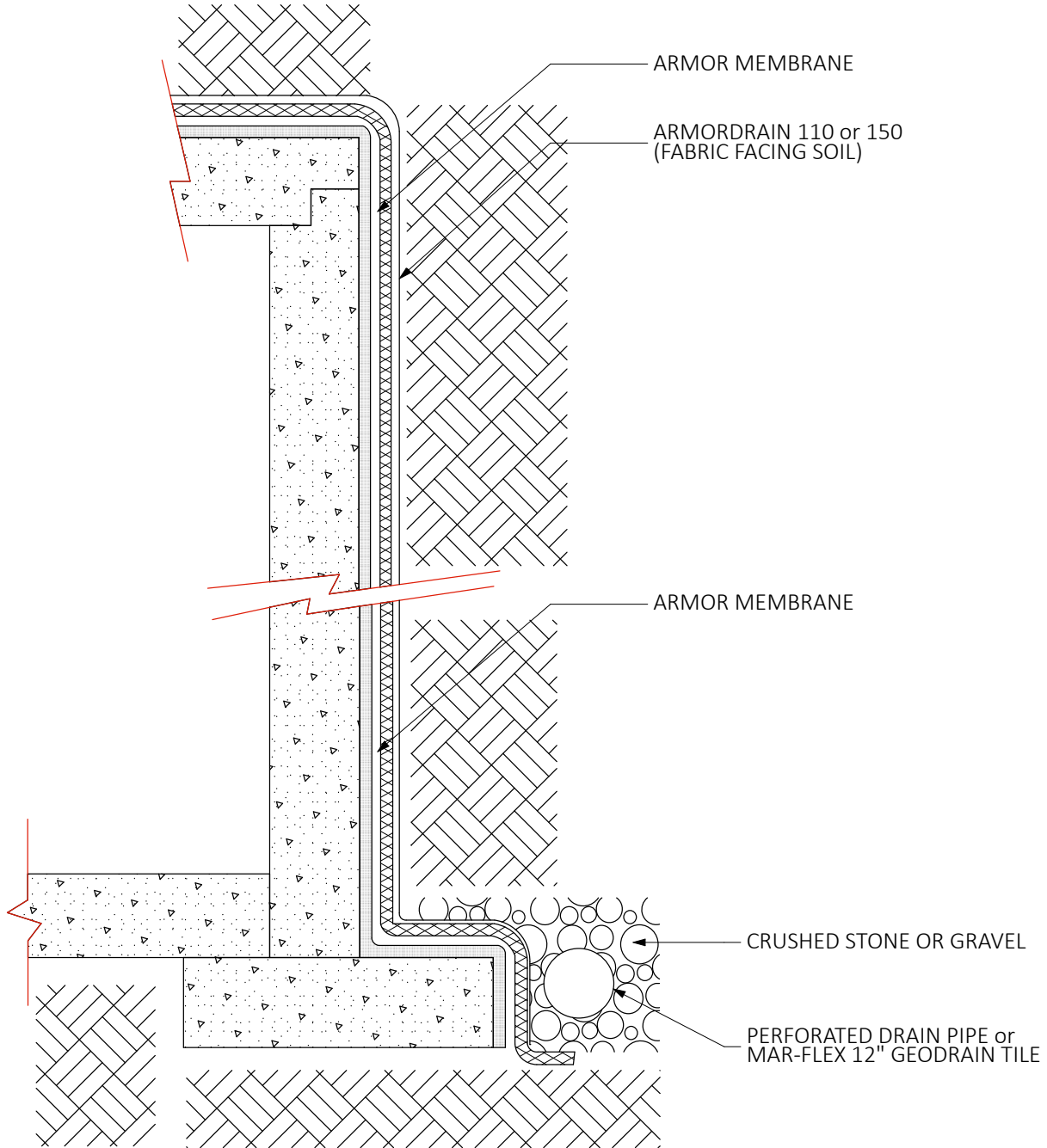
NOTES:
INTERLOCK A MINIMUM OF 4 DIMPLES

DB 100 & 150 / DLS

DRAINAGE COMPOSITE SPLICE



**WATERPROOFING &
BUILDING PRODUCTS**

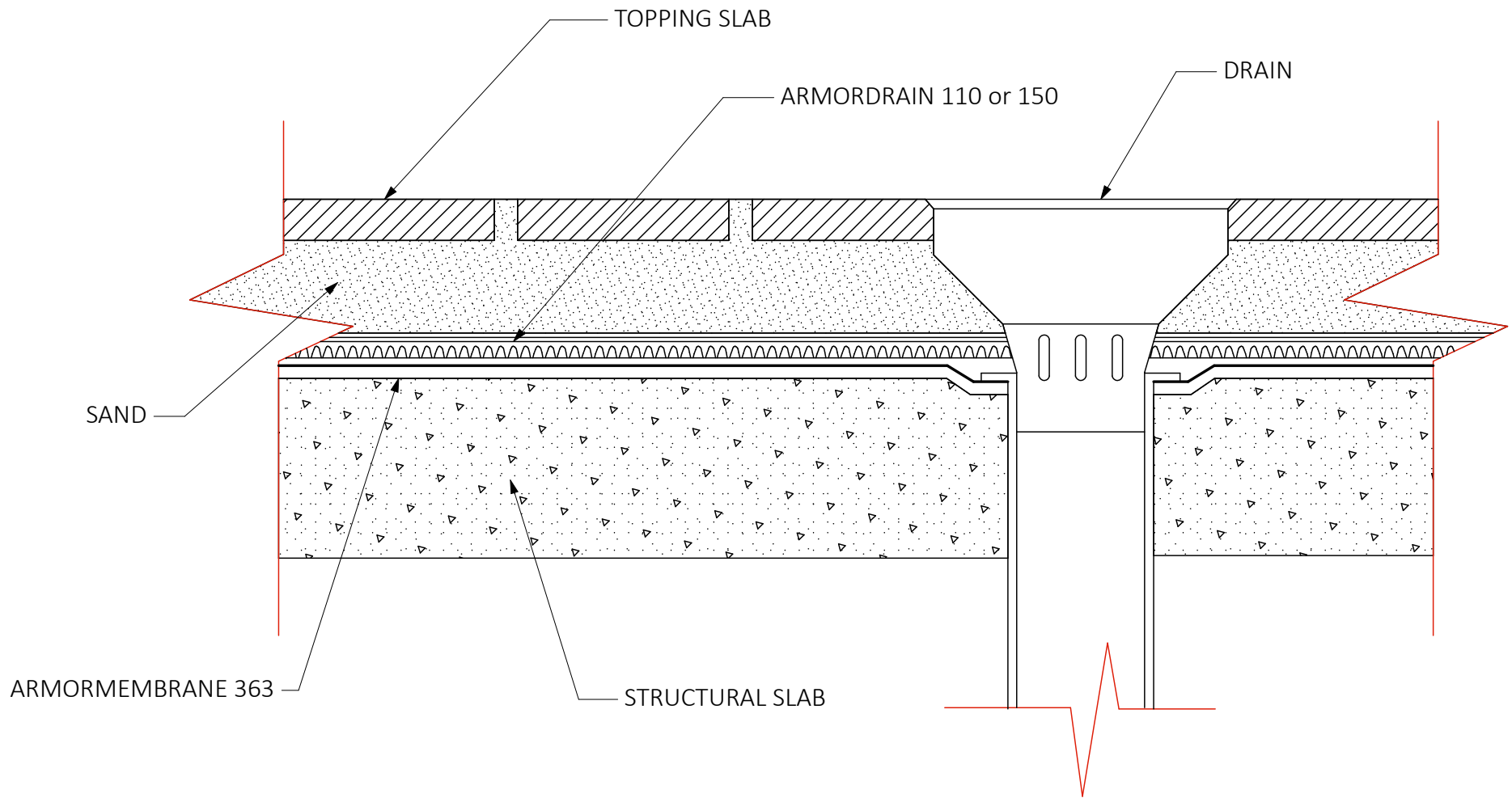


DB 100 & 150 / TD

TYPICAL TUNNEL DETAIL



**WATERPROOFING &
BUILDING PRODUCTS**



DB 110, 150, 400 / PDD

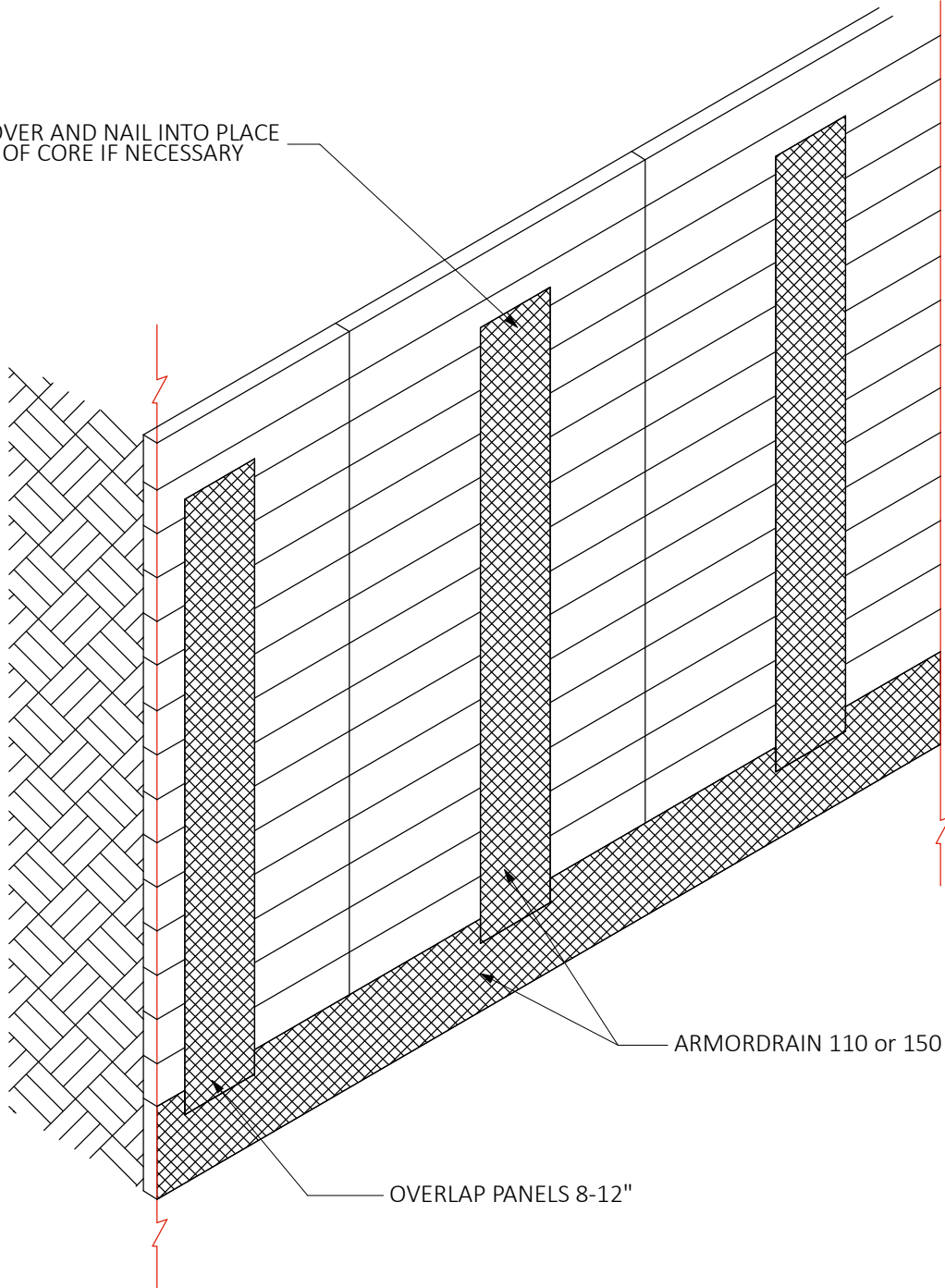
TYPICAL PLAZA DECK DETAIL



**WATERPROOFING &
BUILDING PRODUCTS**



FOLD FABRIC OVER AND NAIL INTO PLACE
REMOVE PART OF CORE IF NECESSARY



ARMORDRAIN 110 or 150

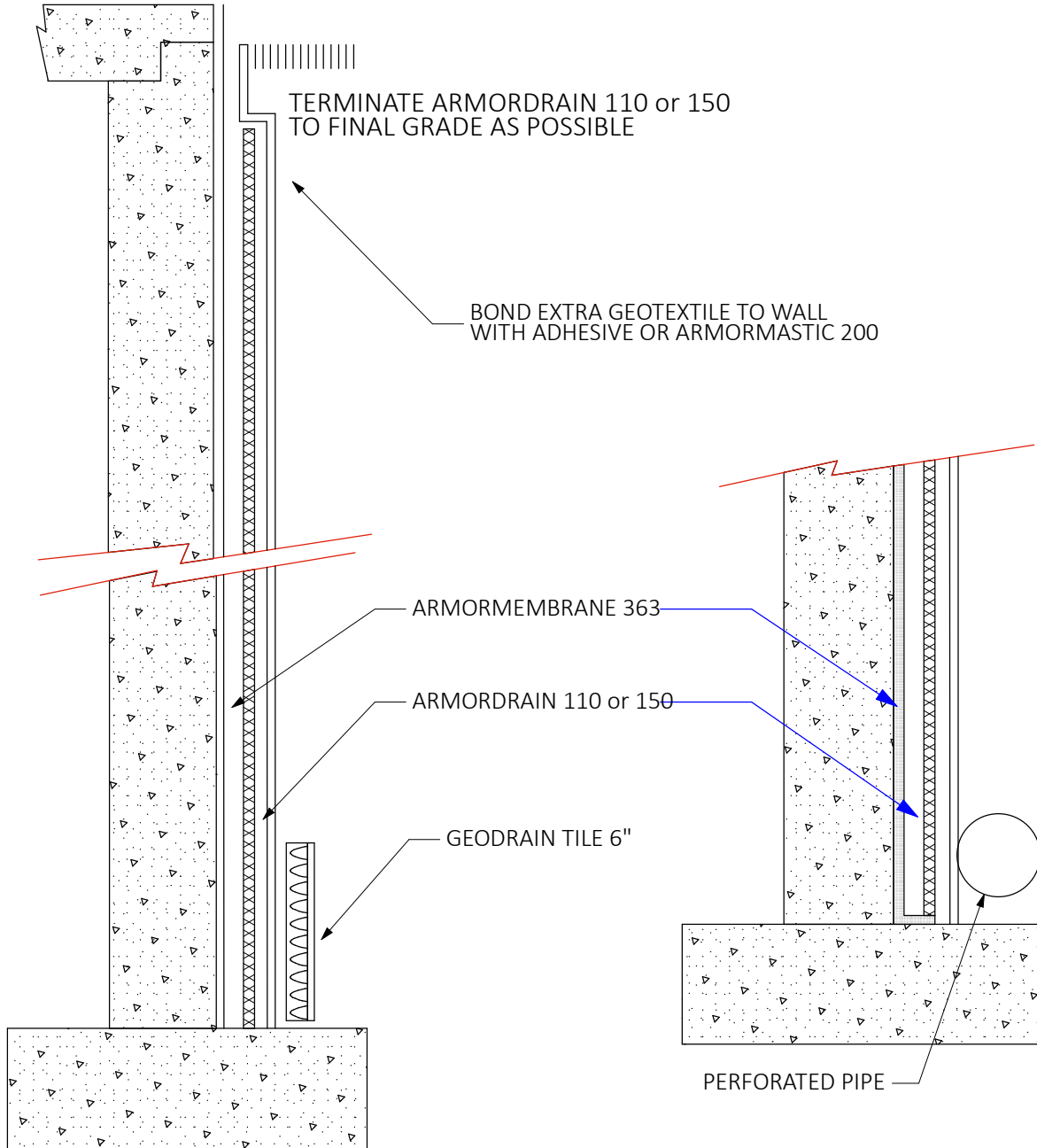
OVERLAP PANELS 8-12"

DB 110 & 150 / CLWD

TYPICAL CHIMNEY ON LAGGING WALL DETAIL



**WATERPROOFING &
BUILDING PRODUCTS**



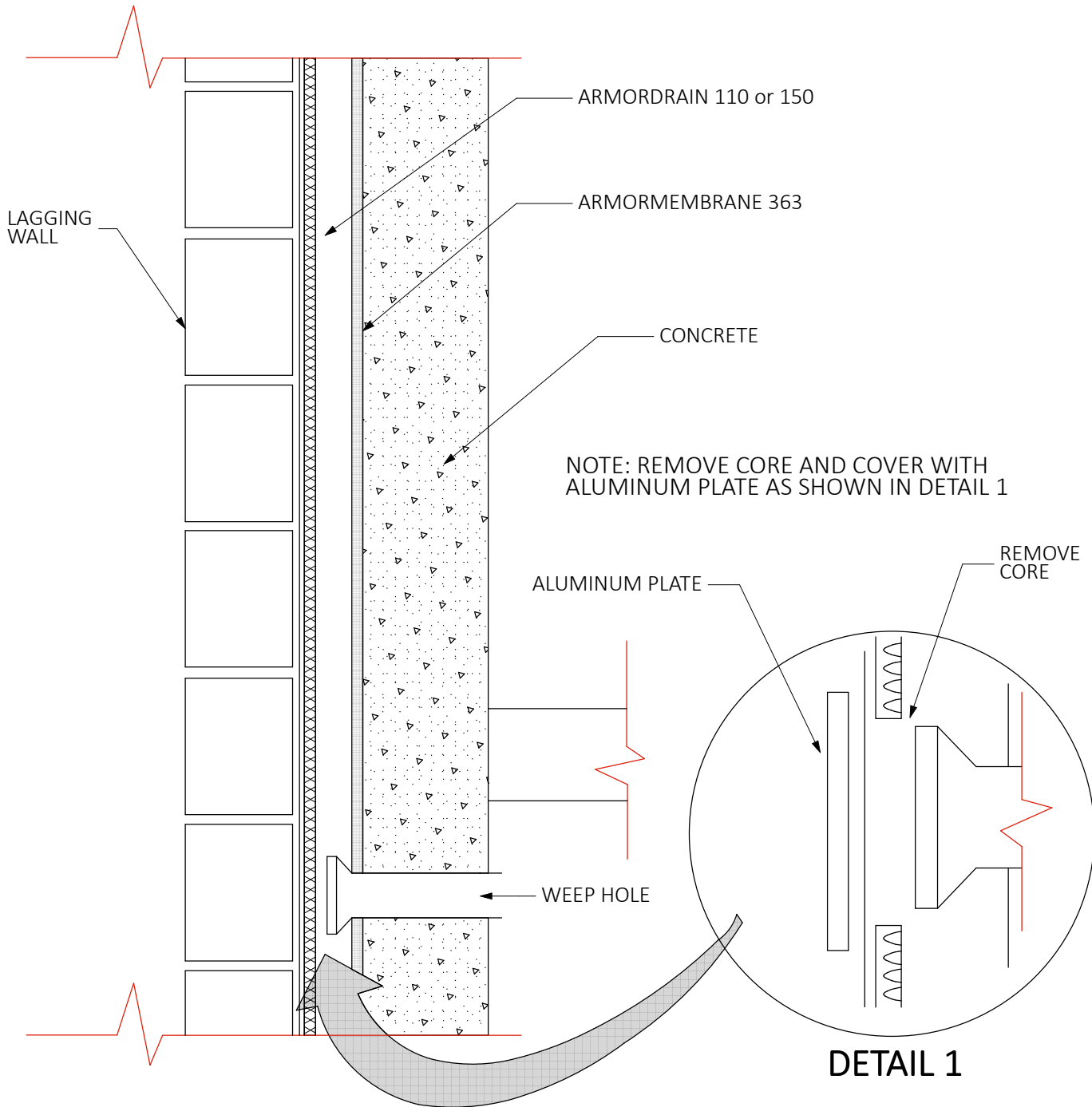
NOTES: ALTERNATE METHOD FOR WATER
COLLECTION. SEE DRAIN AWAY FOUNDATION
DRAINAGE FOR FITTINGS AND ADAPTORS

DB 110 & 150 / FWD

TYPICAL FOUNDATION WALL DETAIL



**WATERPROOFING &
BUILDING PRODUCTS**

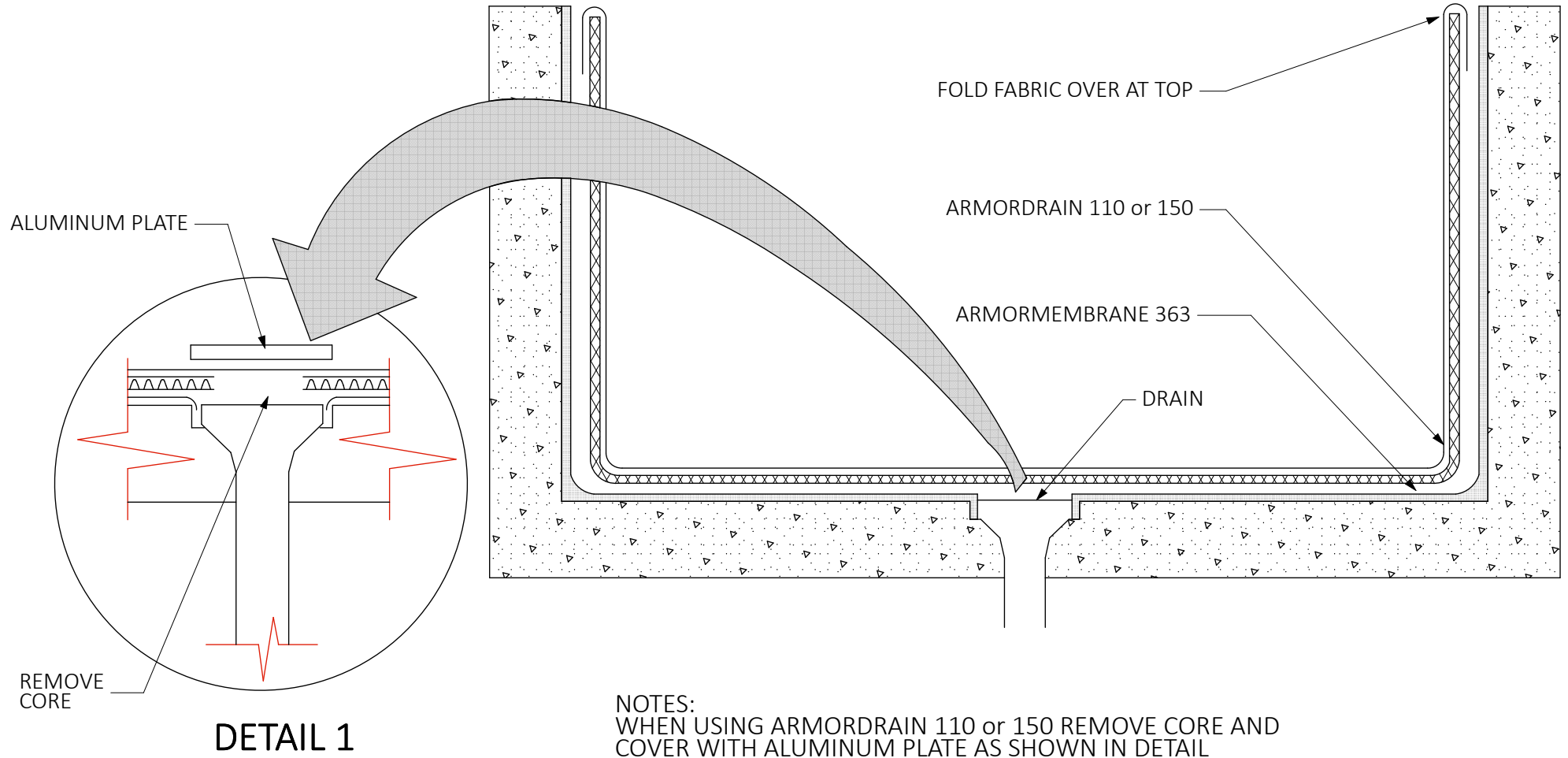


DB110 & 150 / LWD

TYPICAL LAGGING WALL DETAIL



**WATERPROOFING &
BUILDING PRODUCTS**

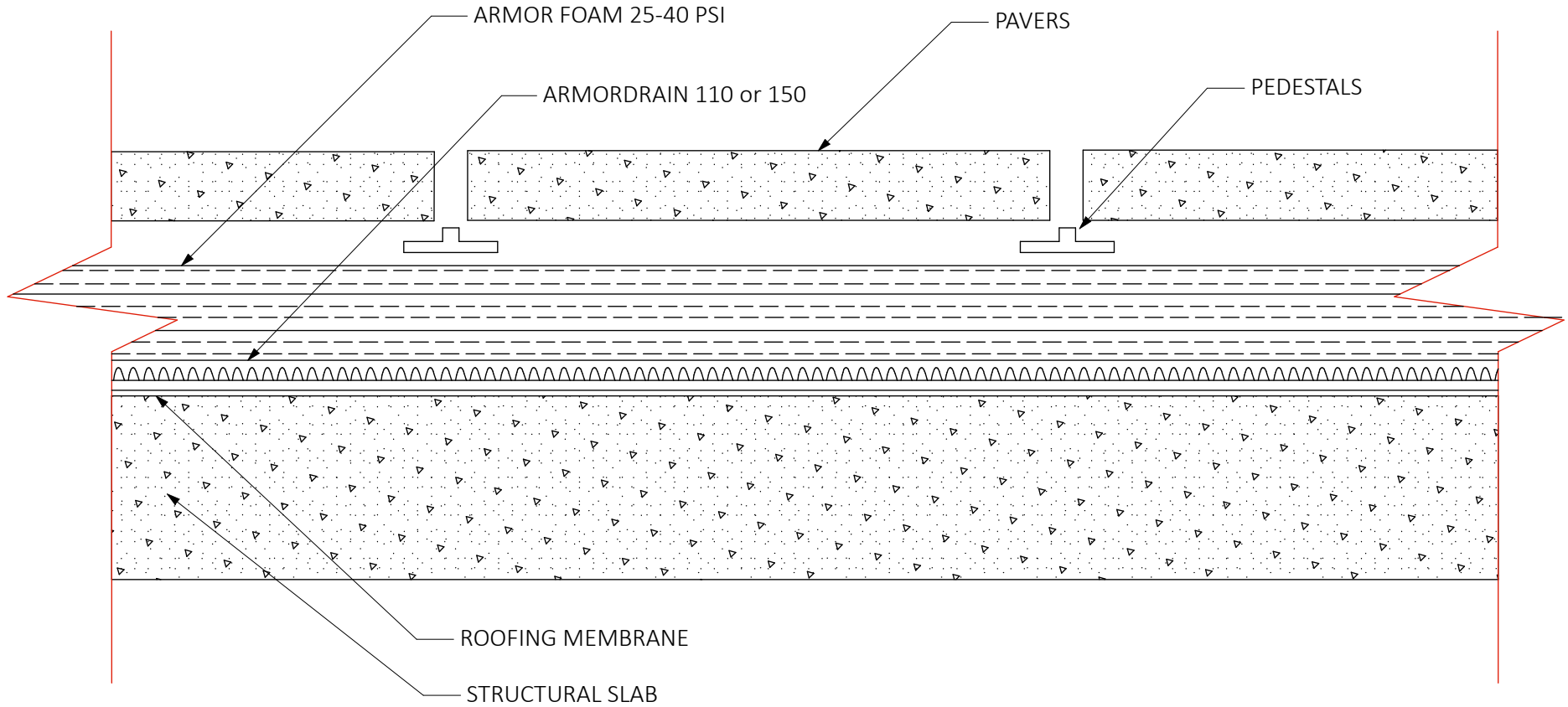


DB 110 & 150 / PD

TYPICAL PLANTER DETAIL



**WATERPROOFING &
BUILDING PRODUCTS**



DB 110 & 150 / PPD

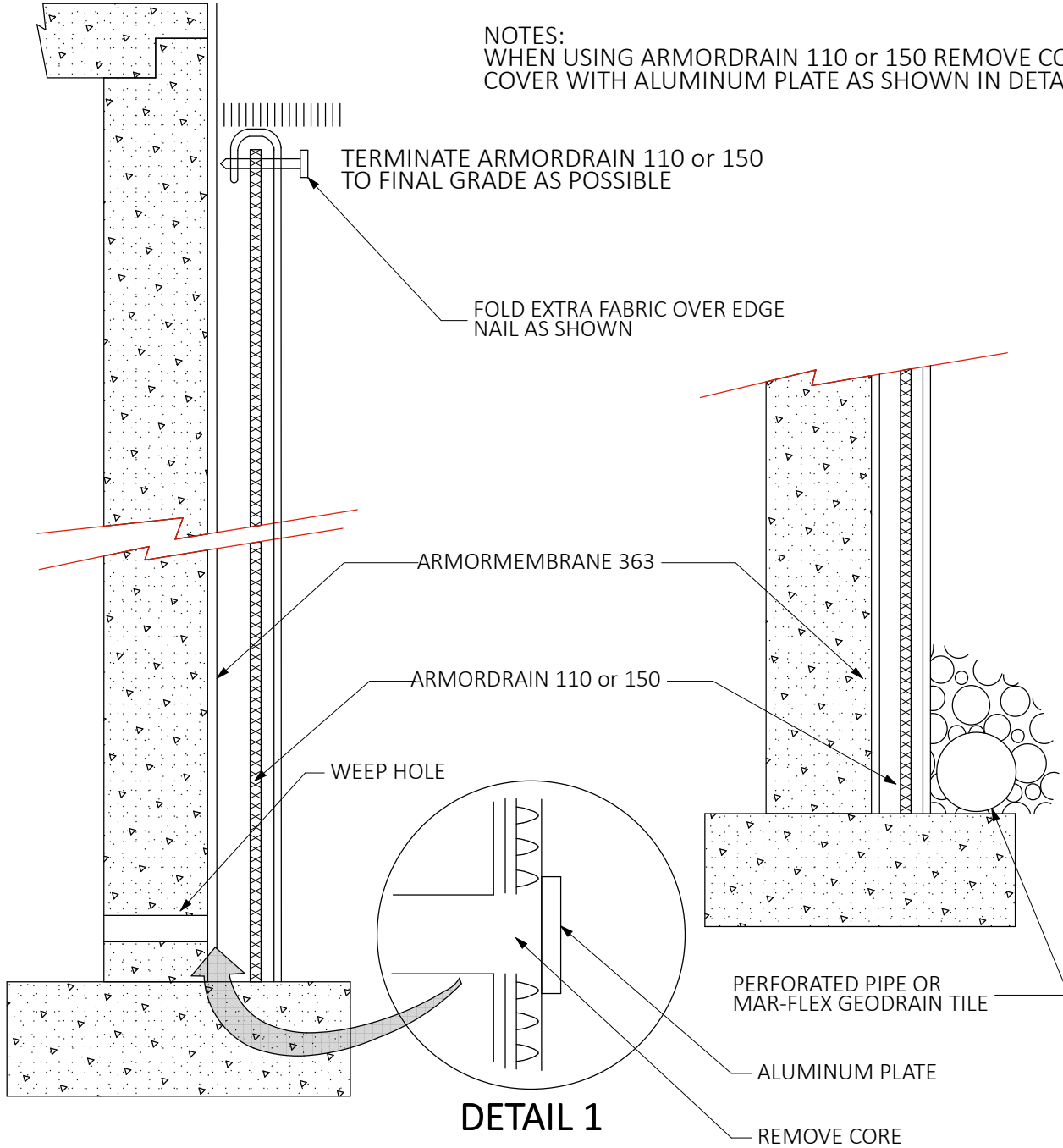
TYPICAL PAVERS / PEDESTALS DETAIL



**WATERPROOFING &
BUILDING PRODUCTS**



NOTES:
WHEN USING ARMORDRAIN 110 or 150 REMOVE CORE AND
COVER WITH ALUMINUM PLATE AS SHOWN IN DETAIL



DB 110 & 150 / RWD

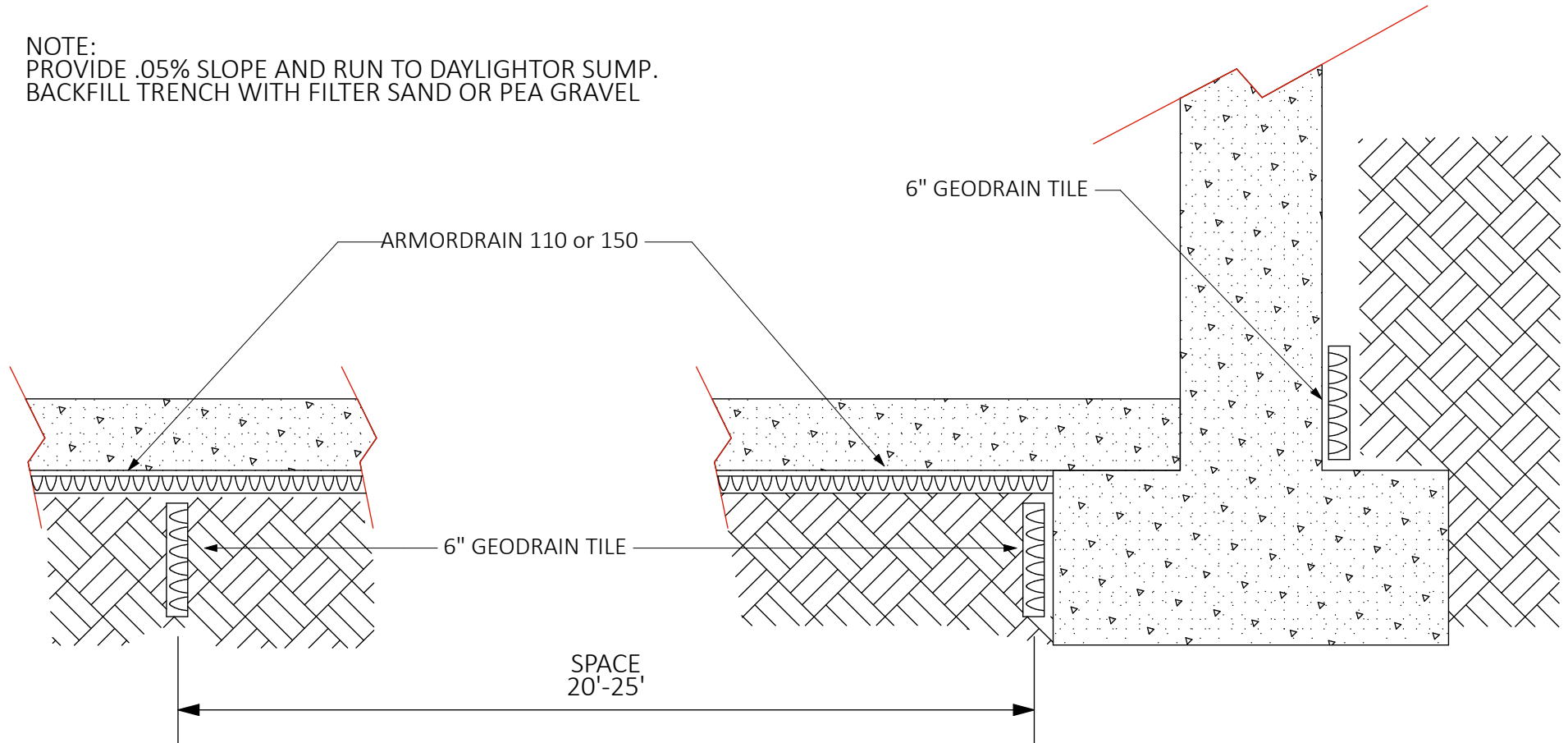
TYPICAL RETAINING WALL DETAIL



**WATERPROOFING &
BUILDING PRODUCTS**



NOTE:
PROVIDE .05% SLOPE AND RUN TO DAYLIGHTOR SUMP.
BACKFILL TRENCH WITH FILTER SAND OR PEA GRAVEL

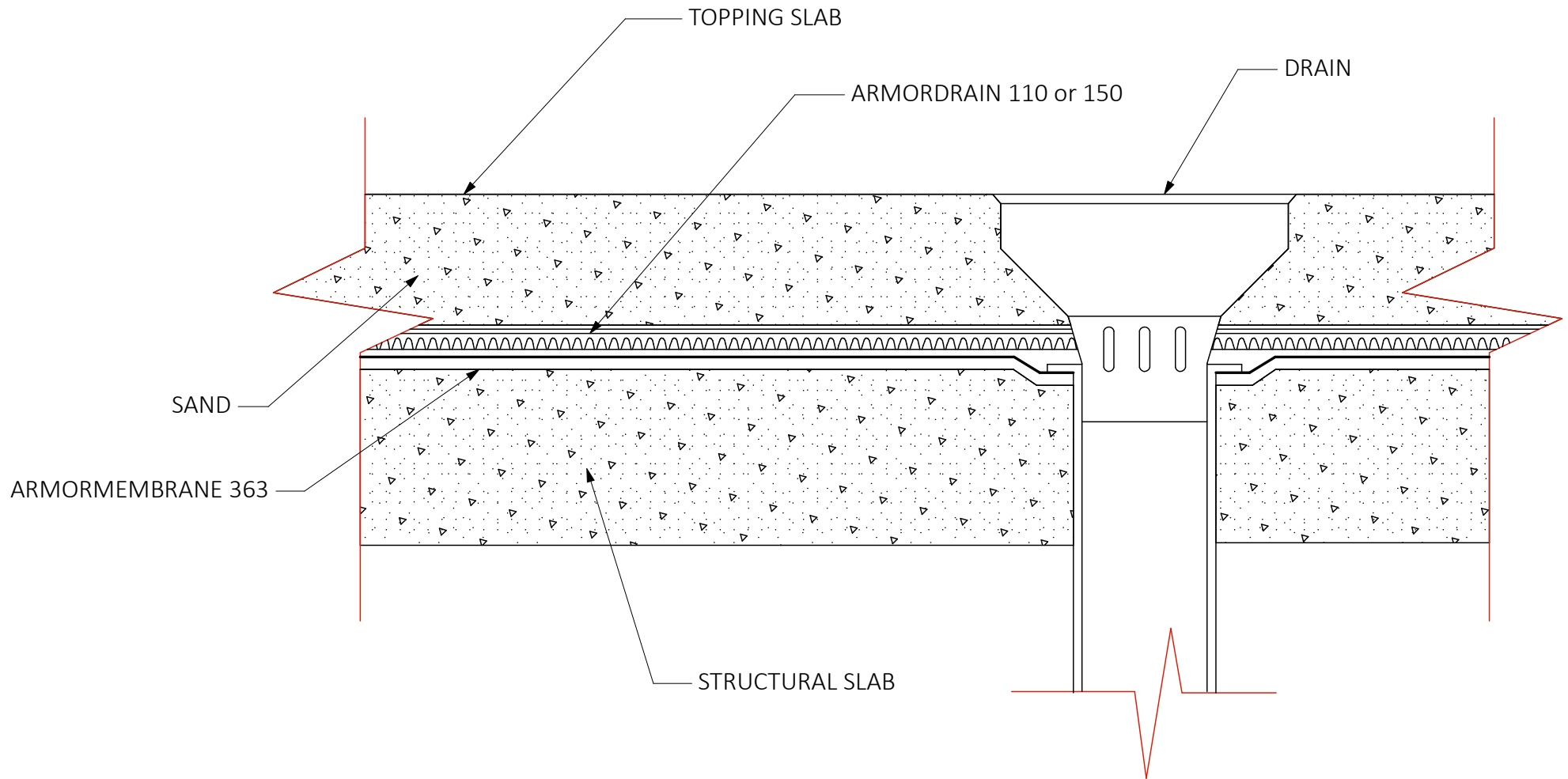


DB 110 & 150 / USDD

TYPICAL UNDERSLAB DRAINAGE DETAIL



**WATERPROOFING &
BUILDING PRODUCTS**

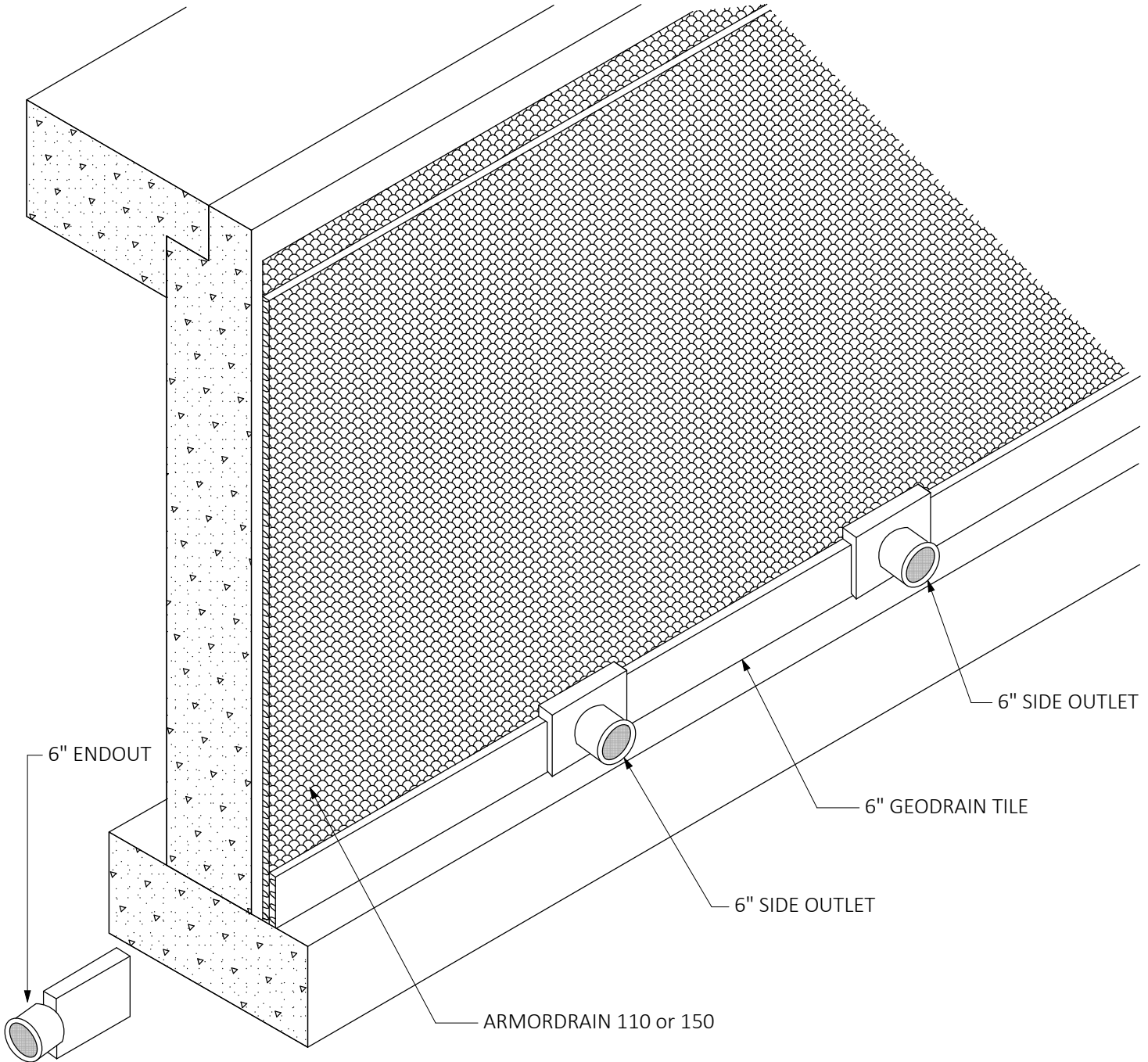


DB 150 & 400 / SSD

TYPICAL SPLIT SLAB DETAIL



**WATERPROOFING &
BUILDING PRODUCTS**



DB 6" / WDWCD

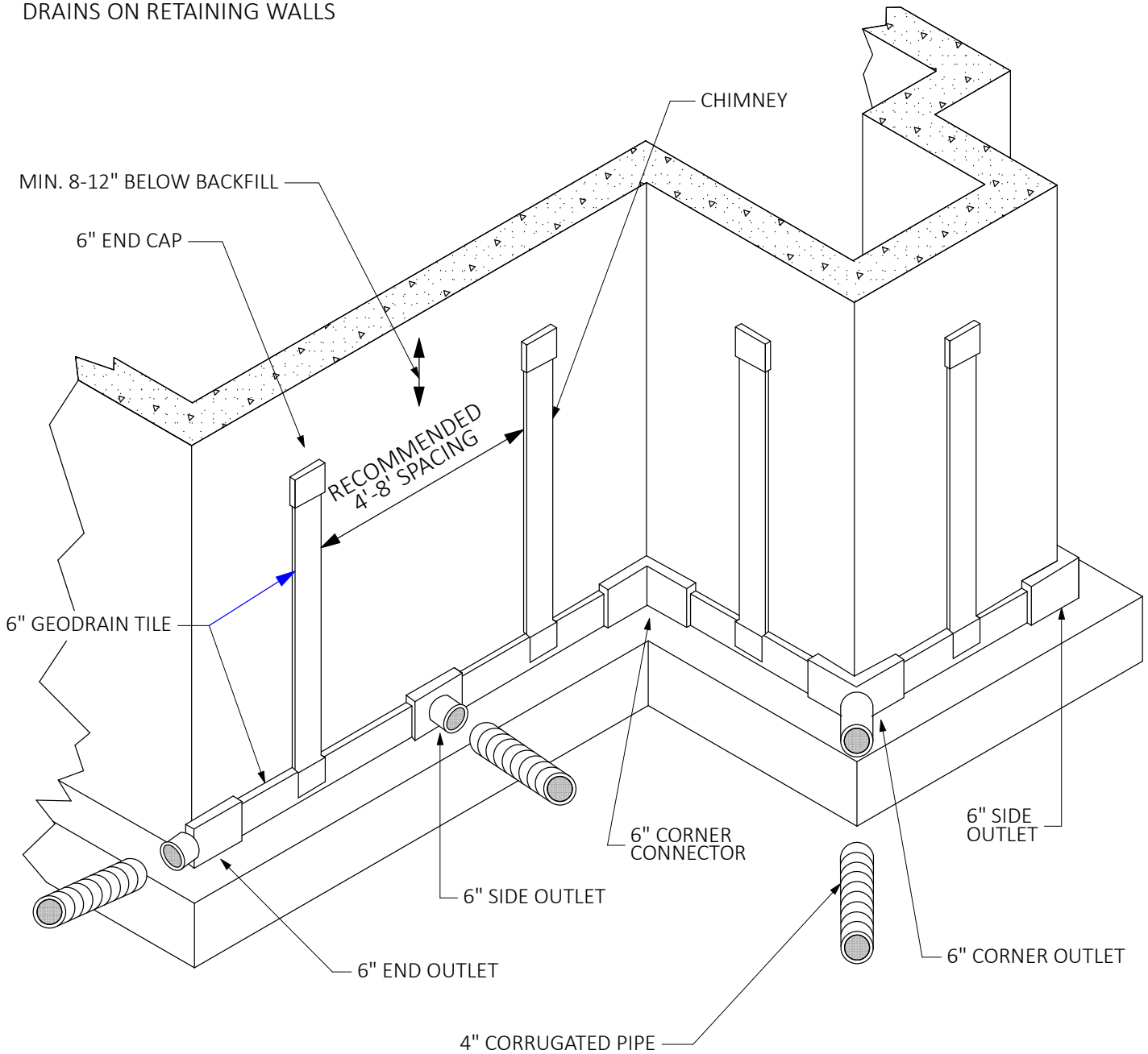
TYPICAL WALL DRAINAGE WATER COLLECTION DETAIL



**WATERPROOFING &
BUILDING PRODUCTS**



NOTE: CAN ALSO BE USED AS WEEP HOLE
DRAINS ON RETAINING WALLS



DT6 / FRWCD

**TYPICAL FOUNDATION / RETAINING WALL
WITH CHIMNEY SYSTEM**